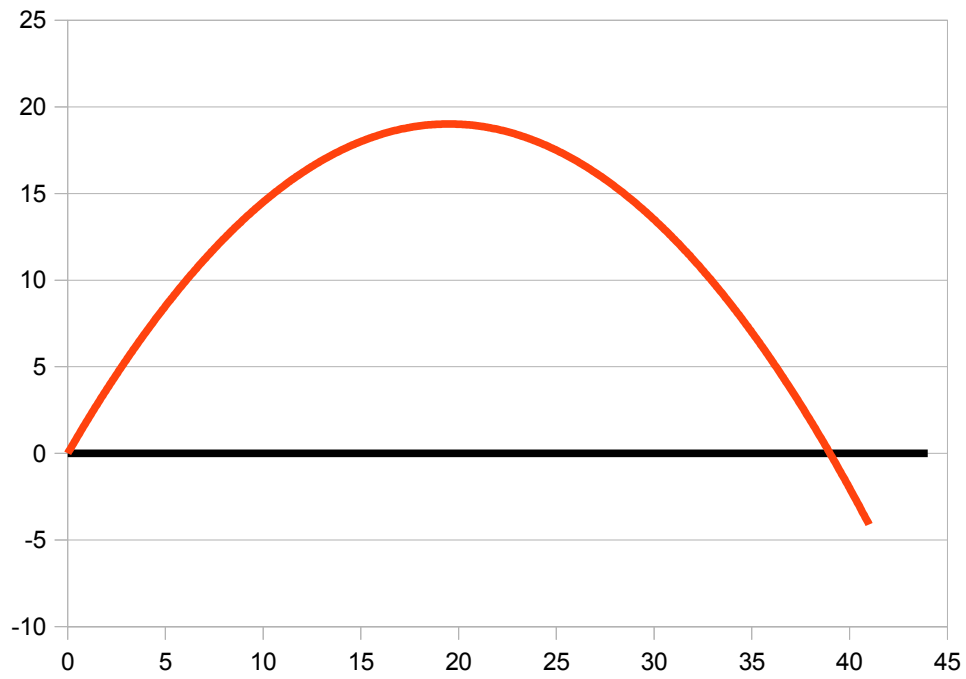


Profit Maximization, MR = MC

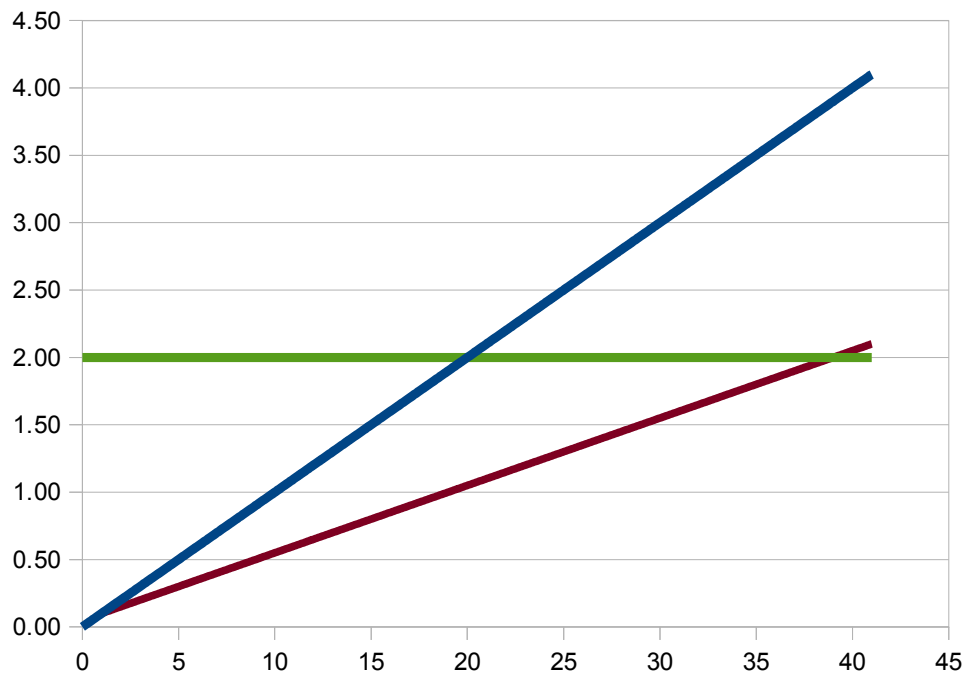
Q	MC=\$0.10*Q	MR=p=\$2	profit=TR-TC	TR=\$2*Q	TC	AC=TC/Q
0	0.00	2.00	0.00	0.00	0.00	—
1	0.10	2.00	1.90	2.00	0.10	0.10
2	0.20	2.00	3.70	4.00	0.30	0.15
3	0.30	2.00	5.40	6.00	0.60	0.20
4	0.40	2.00	7.00	8.00	1.00	0.25
5	0.50	2.00	8.50	10.00	1.50	0.30
6	0.60	2.00	9.90	12.00	2.10	0.35
7	0.70	2.00	11.20	14.00	2.80	0.40
8	0.80	2.00	12.40	16.00	3.60	0.45
9	0.90	2.00	13.50	18.00	4.50	0.50
10	1.00	2.00	14.50	20.00	5.50	0.55
11	1.10	2.00	15.40	22.00	6.60	0.60
12	1.20	2.00	16.20	24.00	7.80	0.65
13	1.30	2.00	16.90	26.00	9.10	0.70
14	1.40	2.00	17.50	28.00	10.50	0.75
15	1.50	2.00	18.00	30.00	12.00	0.80
16	1.60	2.00	18.40	32.00	13.60	0.85
17	1.70	2.00	18.70	34.00	15.30	0.90
18	1.80	2.00	18.90	36.00	17.10	0.95
19	1.90	2.00	19.00	38.00	19.00	1.00
20	2.00	2.00	19.00	40.00	21.00	1.05
21	2.10	2.00	18.90	42.00	23.10	1.10
22	2.20	2.00	18.70	44.00	25.30	1.15
23	2.30	2.00	18.40	46.00	27.60	1.20
24	2.40	2.00	18.00	48.00	30.00	1.25
25	2.50	2.00	17.50	50.00	32.50	1.30
26	2.60	2.00	16.90	52.00	35.10	1.35
27	2.70	2.00	16.20	54.00	37.80	1.40
28	2.80	2.00	15.40	56.00	40.60	1.45
29	2.90	2.00	14.50	58.00	43.50	1.50
30	3.00	2.00	13.50	60.00	46.50	1.55
31	3.10	2.00	12.40	62.00	49.60	1.60
32	3.20	2.00	11.20	64.00	52.80	1.65
33	3.30	2.00	9.90	66.00	56.10	1.70
34	3.40	2.00	8.50	68.00	59.50	1.75
35	3.50	2.00	7.00	70.00	63.00	1.80
36	3.60	2.00	5.40	72.00	66.60	1.85
37	3.70	2.00	3.70	74.00	70.30	1.90
38	3.80	2.00	1.90	76.00	74.10	1.95
39	3.90	2.00	0.00	78.00	78.00	2.00
40	4.00	2.00	-2.00	80.00	82.00	2.05
41	4.10	2.00	-4.10	82.00	86.10	2.10

Profit Maximization, MR = MC

Profit



Marginal Revenue, Marginal Cost and Average Cost

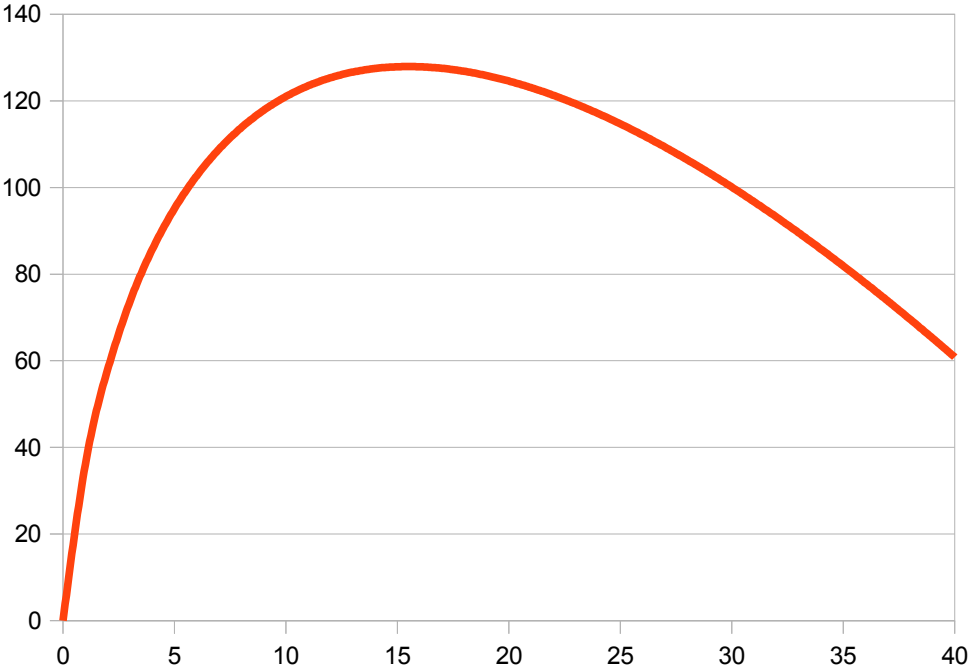


Profit Maximization, $w = p \cdot MPL$

L	w=\$12	$p \cdot MPL = \$2 \cdot 24 / \sqrt{L}$	profit=TR-TC	TR	TC=w*L
0	12.00	—	0.00	0.00	0.00
1	12.00	48.00	36.00	48.00	12.00
2	12.00	33.94	57.94	81.94	24.00
3	12.00	27.71	73.65	109.65	36.00
4	12.00	24.00	85.65	133.65	48.00
5	12.00	21.47	95.12	155.12	60.00
6	12.00	19.60	102.72	174.72	72.00
7	12.00	18.14	108.86	192.86	84.00
8	12.00	16.97	113.83	209.83	96.00
9	12.00	16.00	117.83	225.83	108.00
10	12.00	15.18	121.01	241.01	120.00
11	12.00	14.47	123.48	255.48	132.00
12	12.00	13.86	125.34	269.34	144.00
13	12.00	13.31	126.65	282.65	156.00
14	12.00	12.83	127.48	295.48	168.00
15	12.00	12.39	127.87	307.87	180.00
16	12.00	12.00	127.87	319.87	192.00
17	12.00	11.64	127.51	331.51	204.00
18	12.00	11.31	126.83	342.83	216.00
19	12.00	11.01	125.84	353.84	228.00
20	12.00	10.73	124.57	364.57	240.00
21	12.00	10.47	123.05	375.05	252.00
22	12.00	10.23	121.28	385.28	264.00
23	12.00	10.01	119.29	395.29	276.00
24	12.00	9.80	117.09	405.09	288.00
25	12.00	9.60	114.69	414.69	300.00
26	12.00	9.41	112.10	424.10	312.00
27	12.00	9.24	109.34	433.34	324.00
28	12.00	9.07	106.41	442.41	336.00
29	12.00	8.91	103.32	451.32	348.00
30	12.00	8.76	100.09	460.09	360.00
31	12.00	8.62	96.71	468.71	372.00
32	12.00	8.49	93.19	477.19	384.00
33	12.00	8.36	89.55	485.55	396.00
34	12.00	8.23	85.78	493.78	408.00
35	12.00	8.11	81.89	501.89	420.00
36	12.00	8.00	77.89	509.89	432.00
37	12.00	7.89	73.78	517.78	444.00
38	12.00	7.79	69.57	525.57	456.00
39	12.00	7.69	65.26	533.26	468.00
40	12.00	7.59	60.85	540.85	480.00
41	12.00	7.50	56.34	548.34	492.00

Profit Maximization, $w = p \cdot MPL$

Profit



Wage and Marginal Revenue Product of Labor

